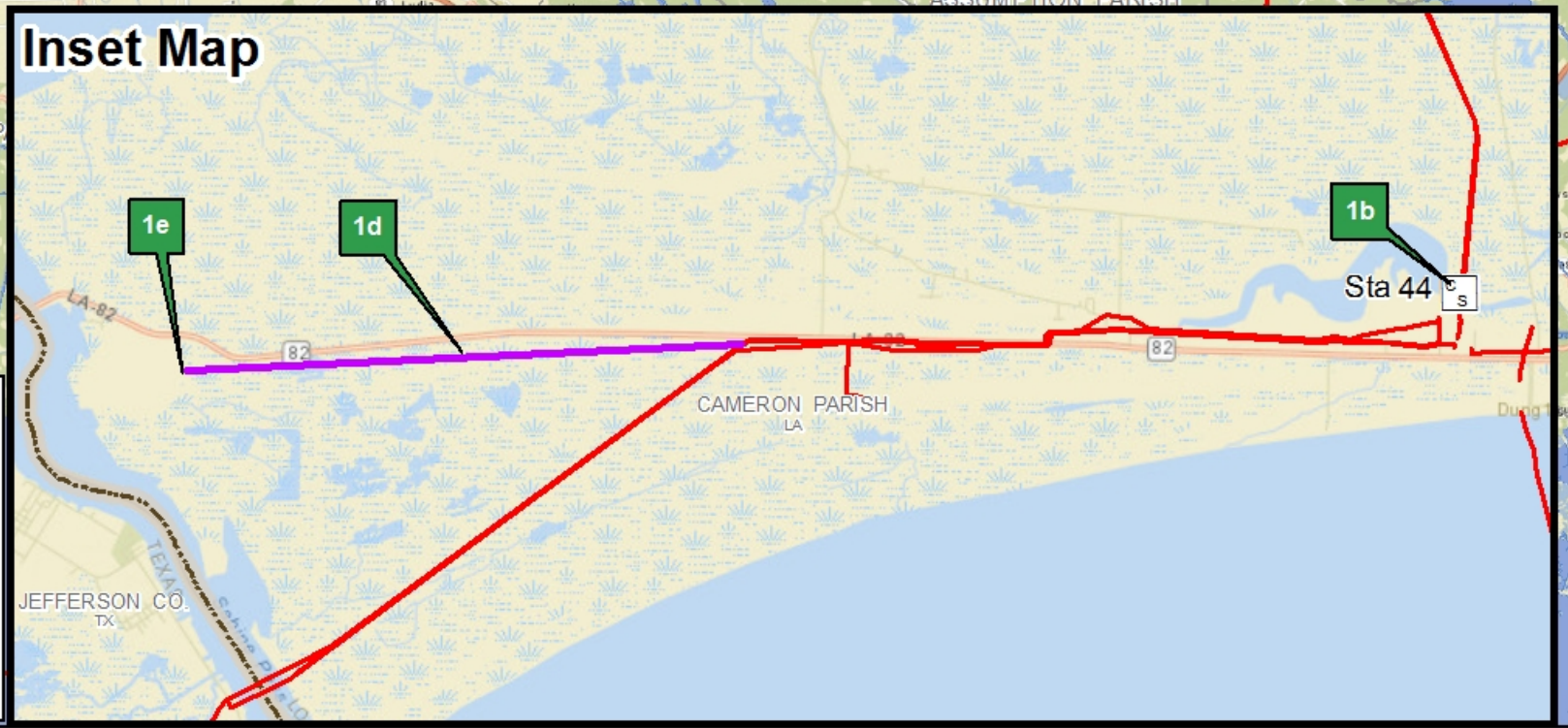
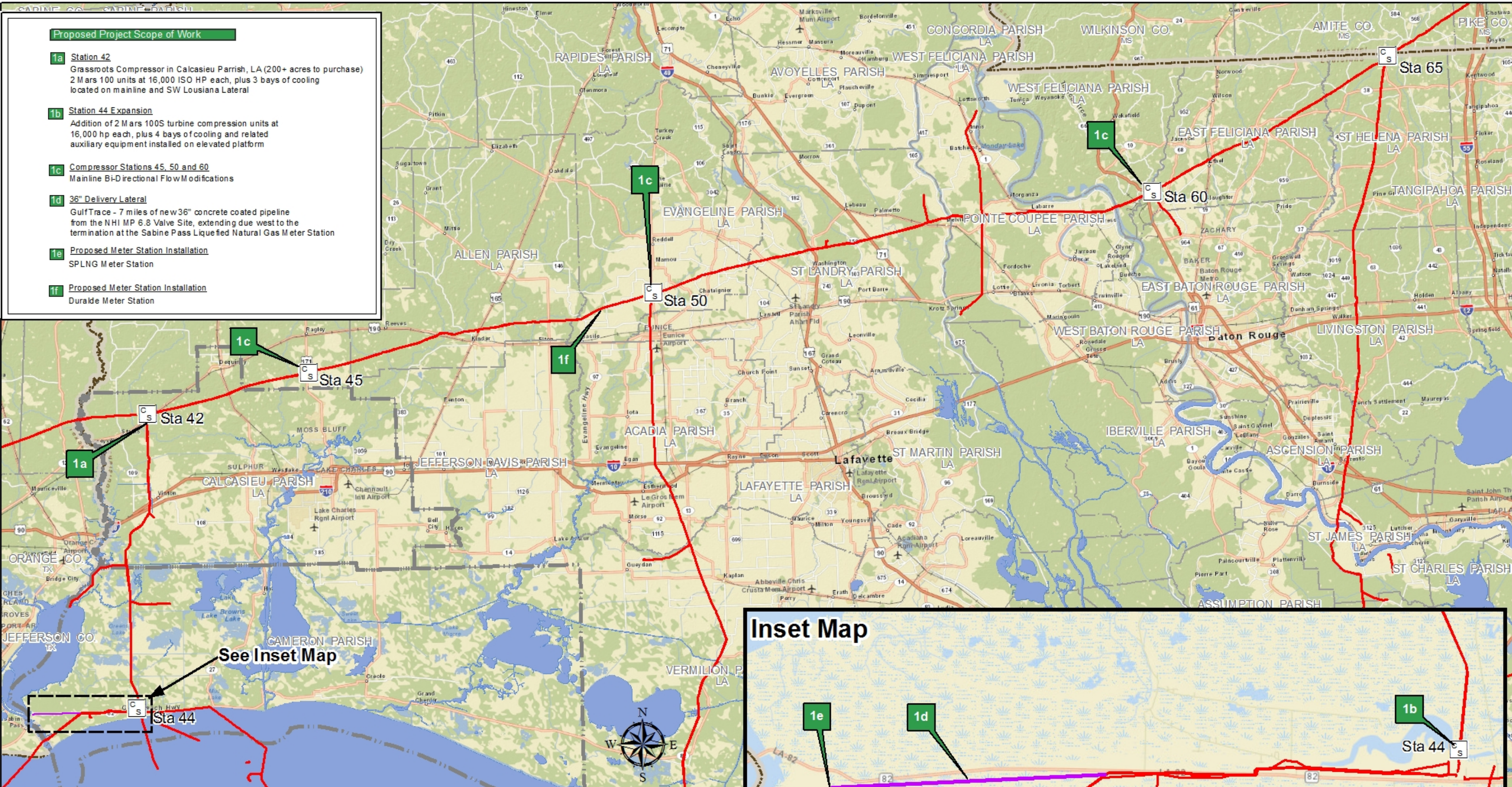


Proposed Project Scope of Work

- 1a Station 42**
Grassroots Compressor in Calcasieu Parrish, LA (200+ acres to purchase)
2 Mars 100 units at 16,000 ISO HP each, plus 3 bays of cooling located on mainline and SW Louisiana Lateral
- 1b Station 44 Expansion**
Addition of 2 Mars 100S turbine compression units at 16,000 hp each, plus 4 bays of cooling and related auxiliary equipment installed on elevated platform
- 1c Compressor Stations 45, 50 and 60**
Mainline Bi-Directional Flow Modifications
- 1d 36" Delivery Lateral**
GulfTrace - 7 miles of new 36" concrete coated pipeline from the NHI MP 6.8 Valve Site, extending due west to the termination at the Sabine Pass Liquefied Natural Gas Meter Station
- 1e Proposed Meter Station Installation**
SPLNG Meter Station
- 1f Proposed Meter Station Installation**
Duralde Meter Station



GULF TRACE EXPANSION PROJECT OVERVIEW MAP



Legend

PIPELINE	
—	GULF TRACE 36" DELIVERY LATERAL
—	TRANSCO PIPELINE

ENGINEERING SERVICES, HOUSTON, TEXAS,
MAPPING & DRAFTING DEPT.

0 15 30
Miles

DATE: Sept. 10, 2014 PROJECTION: WGP Albers Equal Area Conic

DRAWING: K3LP000675\Mapping\Exhibits\Gulf Trace_ver_100914.mxd